



MACLIT INDICATOR



PILOT LAMP &
INDICATOR

FEATURES

- The Maclit indicator is operated by the electromagnetic polarity inversion method. The status is displayed by rotating the display part. The SS and MS types have built-in LED for night time use.
- SS and MS can display 3 states; "Load ON", "Load OFF", "Loss of power to the indicator".
- Materials with high weather resistance are available for outdoor equipment (SQ and MS types).
- The Maclit Indicator can operate at low power consumption. It offers various advantages including energy saving, space saving, and maintenance free.
- The MS type is provided with the residual display function. When the display power source is lost, the color displayed immediately before that loss and the other colors appear at their respective ratios of 2/3 and 1/3 on the display part. This function allows you to identify the status at a glance in which the power source has been lost (except for the MSD indicator).

SPECIFICATIONS (RATINGS, PERFORMANCE)

Specification	Type	LS	SS / SQ	MS
Rated insulation voltage (UI)		250V AC / DC		
Rated current		25mA to 40mA AC / DC	20mA AC / DC	25mA AC / DC
Withstand voltage		2,000V AC / 1 min.	2,500V AC / 1 min.	
Lightning impulse		±6,000V / 3 times for each pole (1.2 / 50 μs)	±7,000V / 3 times for each pole (1.2 / 50 μs)	
Insulation resistance		100MΩ or more		
Shock resistance		30G or more	50G or more	
Service life		100,000 times or more	300,000 times or more	100,000 times or more
Location of use		Indoor / outdoor	SS : Indoor / SQ : outdoor	Indoor / outdoor
Operating temperature		-20 to 75°C	-40 to 70°C	
Degree of protection			SS : IP40 SQ : IP65	IP55



MACLIT INDICATOR

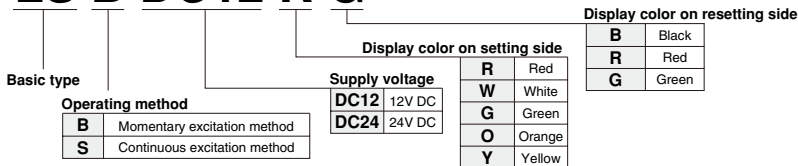
HOW TO ORDER

Select from the following product coding.

PRODUCT CODING

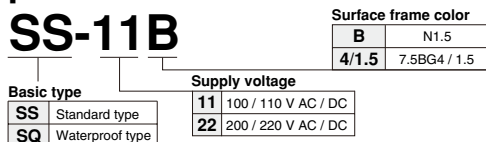
LS type (Mounted on PCB)

LS B DC12 R G



SS type

SS-11B

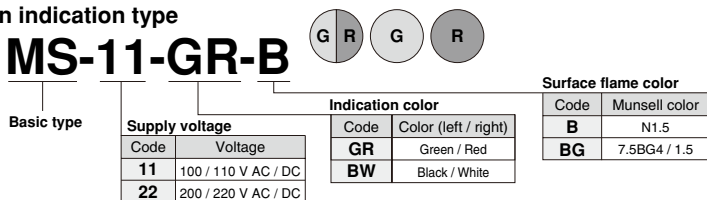


* For information on combinations of illumination colors on the "set" and "reset" sides, contact FUJI ELECTRIC INDUSTRY.

MS type

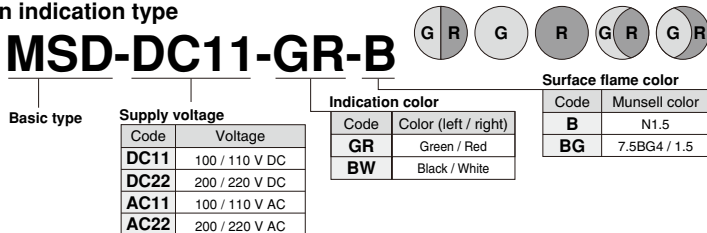
3 pattern indication type

MS-11-GR-B



5 pattern indication type

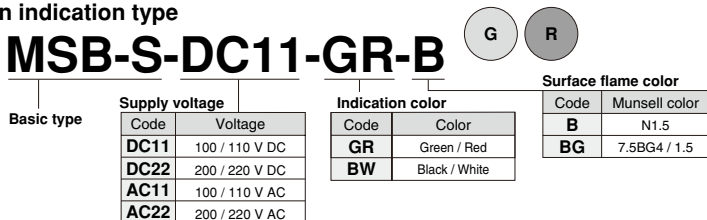
MSD-DC11-GR-B



A separate resistor is equipped for DC22 and AC22 type.

2 pattern indication type

MSB-S-DC11-GR-B



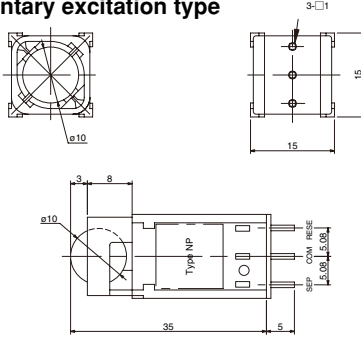
A separate resistor is equipped for DC22 type.



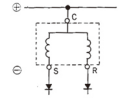
MACLIT INDICATOR

LS TYPE

LSB TYPE Momentary excitation type

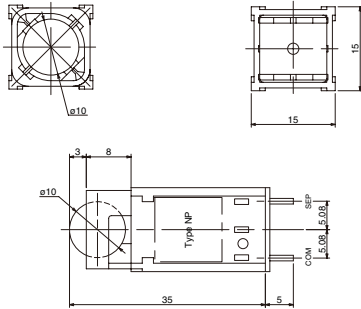


● Circuit diagram

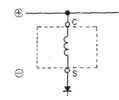


PILOT LAMP & INDICATOR

LSS TYPE Continuous excitation type

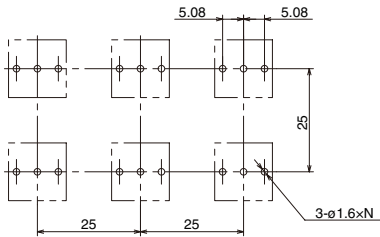


● Circuit diagram

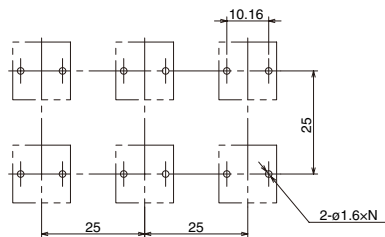


MOUNTING DIMENSIONS

[LSB]



[LSS]

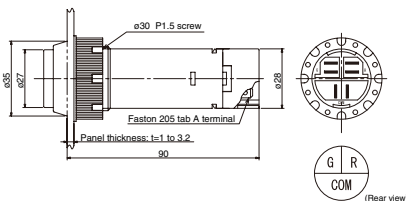




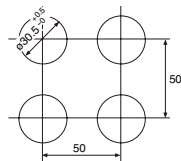
MACLIT INDICATOR

SS TYPE

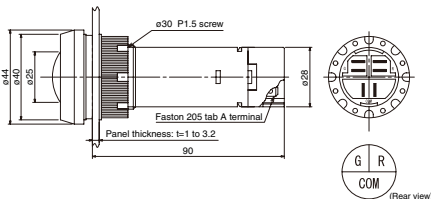
SS TYPE Standard type



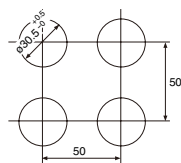
● Mounting hole size



SQ TYPE Waterproof type



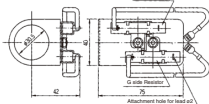
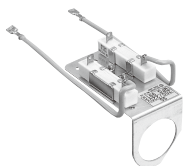
● Mounting hole size



ACCESSORIES [SS · SQ TYPE]

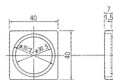
Resistor [SS-22]

For 200 / 220 V:
Use the SS-11 for the main body.
The resistor is 6 k Ω , 10 W for the R side or 9 k Ω , 10 W for the G side.



Square type adapter

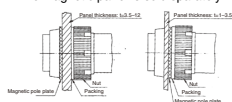
Only SS type can be mounted.



Name	Color
SS adapter 4/1.5	7.5BG4/1.5
SS adapter B	N1.5

[Applicable panel]

It is necessary when the applicable panel is a non-magnetic body:
* The magnetic panel is sold separately.

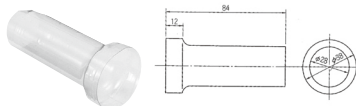


[Tightening tool C]



Insert the pawl into the slot in the nut and then turn it.

[Condensation-free cover: SQ-CV-C]



Note: When the panel thickness is 6 to 12 mm, the nut becomes different. Specify the nut additionally.

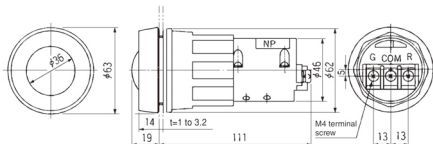


MACLIT INDICATOR

MS TYPE

MS TYPE (Common to all models)

● Mounting hole size



* The terminal protective cover (MS-CV) is provided as standard equipment.

PILOT LAMP & INDICATOR

MODELS AND CIRCUIT TYPES

Type	Supply voltage	Surface color	Circuit type		Operating status	Lens color
			110V	220V		
MS-11	110V AC / DC When used at 220V AC / DC, mount a separate resistor of 3.9kΩ, 10W.	Black · 7.5BG 4/1.5			<ol style="list-style-type: none"> (1) When b is turned ON, G (green) is displayed. (2) When a is turned ON, R (red) is displayed. (3) When the power is turned OFF, the center color is displayed. 	R · G (Red · Green)
MSD-DC11	110V DC When used at 220V DC, mount a separate resistor of 3.9kΩ, 10W.	Black · 7.5BG 4/1.5			<ol style="list-style-type: none"> (1) When b is turned ON, G (green) is displayed. (2) When a is turned ON, R (red) is displayed. (3) When the power is OFF, the indicator is in the previous operating mode and does not return to the center color display mode. 	R · G (Red · Green)
MSD-AC11	110V AC When used at 220V AC, mount a separate resistor of 2.4kΩ, 10W.	Black · 7.5BG 4/1.5			<ol style="list-style-type: none"> (1) When b is turned ON, G (green) is displayed. (2) When a is turned ON, R (red) is displayed. (3) When the power is OFF, the indicator is in the previous operating mode and does not return to the center color display mode. 	R · G (Red · Green)
					<ol style="list-style-type: none"> (1) When b is turned ON, B (black) is displayed. (2) When a is turned ON, W (white) is displayed. (3) When the power is OFF, the indicator is in the previous operating mode and does not return to the center color display mode. 	W · B (White · Black) The LED is yellow.
					<ol style="list-style-type: none"> (1) When b is turned ON, B (black) is displayed. (2) When a is turned ON, W (white) is displayed. (3) When the power is OFF, the indicator is in the previous operating mode and does not return to the center color display mode. 	W · B (White · Black) The LED is yellow.



MACLIT INDICATOR

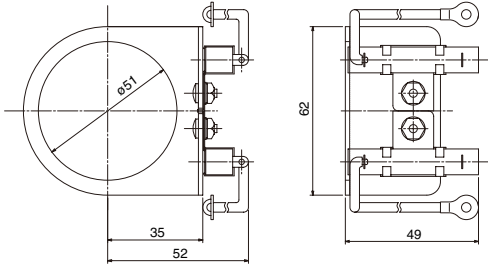
MS TYPE

MODELS AND CIRCUIT TYPES

Type	Supply voltage	Surface color	Circuit type		Operating status	Lens color
			110V	220V		
MSB-S-AC11-BW	110V AC	Black 7.5BG 4/1.5			(1) When a is turned ON, W (white) is displayed. (2) When the power and a are turned OFF, black is displayed. This is simple 2-color display without a center color.	B · W (Black · White)
MSB-S-AC11-GR						
MSB-S-AC22-BW	220V AC No separate resistor is required.	Black 7.5BG 4/1.5			(1) When a is turned ON, W (white) is displayed. (2) When the power and a are turned OFF, black is displayed. This is simple 2-color display without a center color.	B · W (Black · White)
MSB-S-AC22-GR						
MSB-S-DC11-BW	110V DC When used at 220V DC, mount a separate resistor of 3.9kΩ, 10W.	Black 7.5BG 4/1.5			(1) When a is turned ON, W (white) is displayed. (2) When the power and a are turned OFF, black is displayed. This is simple 2-color display without a center color.	B · W (Black · White)
MSB-S-DC22-GR						

ACCESSORIES

Resistor [MS-22]



To use the 100 / 110 V AC / DC type indicator with a 200 / 220 V AC or 200 / 220 V DC power supply, a separate resistor is required.

* If you order the 200 / 220 V AC / DC type indicator, a separate resistor comes with the product as a standard equipment.

HOW TO MOUNT [MS type]

